

ASTON MARTIN  
ISAIA | KITON



CARTIER | CESSNA | DAVIDOFF | DE BETHUNE | FERRARI | FOUR SEASONS | GULFSTREAM | HARRY WINSTON  
LAMBORGHINI | LEVIEV | LÜRSEN | PATEK PHILIPPE | PERINI NAVI | STEINWAY LYNGDORF | TOM FORD & MORE

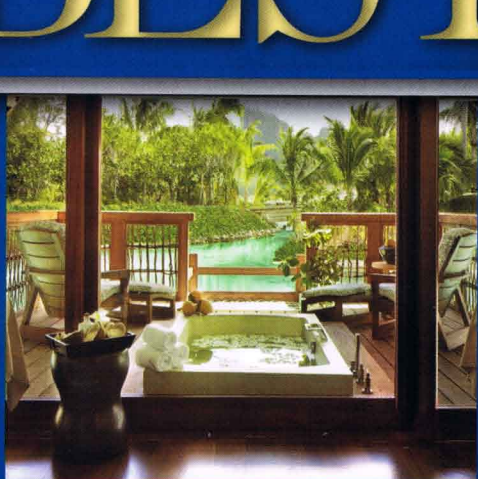
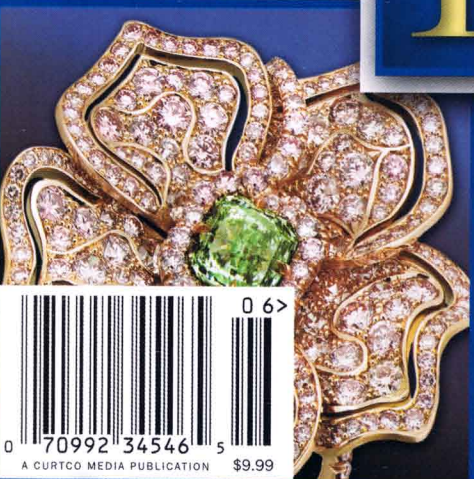
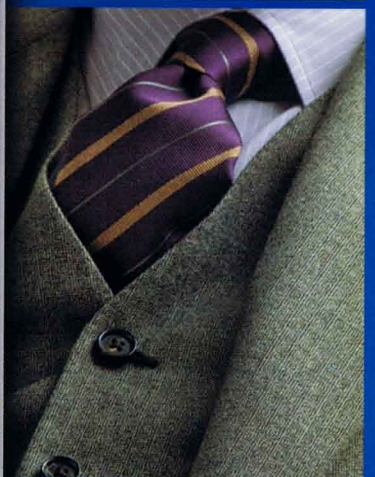


# Robb Report *Special Issue*

RobbReport.com



## 21<sup>st</sup> ANNUAL BEST *of the* BEST



0 70992 34546 5  
A CURTGO MEDIA PUBLICATION \$9.99



*Becker Automotive Design  
Cadillac ESV*

**MULTIPASSENGER  
VEHICLE**  
*Becker Automotive Design  
Cadillac Escalade ESV*

THE SPECIALTY ARENA is choked with aftermarket builders claiming to build a better mouse-trap. But one manufacturer, Becker Automotive Design, has stood the test of time, consistently setting the bar for quality, innovation, and value. The company's latest offering, the Becker Automotive Design Cadillac Escalade ESV (priced from \$150,000 to \$250,000), is the ultimate iteration of a rolling personal office. It is a discreet and understated alternative to chauffeur-driven sedans and limousines in which you can do little but sit in traffic and bungle with a BlackBerry.

While its exterior remains as unassuming as any Escalade's—rating near zero on the look-at-me scale—the ESV's interior is unlike anything from GM. It is spacious and luxurious, and its exclusive rear seats surpass even those of a Maybach 62S for comfort. But the genius of the Becker is its functionality as a fully equipped office-and-entertainment environment, with Internet, computing, theater, and music systems managed by a one-touch Crestron controller. This technology is

matched by custom-ordered materials: leather, wood, and fabrics for the window coverings. Armoring options are also available. —R.R.

*Becker Automotive Design, 805.487.5227,  
[www.beckerautodesign.com](http://www.beckerautodesign.com)*

